

# CAPTURE



## SPECIFICATION

<b>Material Type</b>	Fabrics	<b>Durability</b>	> 50,000 turns Martindale
<b>Supplier</b>	Gabriel	<b>Lightfastness</b>	5-7 (scale 1-8)
<b>Pattern</b>	Melange	<b>Price Class</b>	4
<b>Composition</b>	85% Wools of New Zealand, 15% Nylon	<b>Washing Recommendations</b>	Foam detergent or Dry Cleaning P
<b>Weight</b>	300 g/m <sup>2</sup>	<b>Flammability</b>	EN 1021-1 & 2 (in combination with standard polyurethane 20kg/m <sup>3</sup> - 30 kg/m <sup>3</sup> )

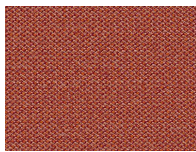
## ABOUT

Capture is a relaxed, elegant quality wool fabric with a sophisticated colour scale and tweed look. It is a good choice when creating warm and harmonious interior design solutions. All the fine qualities of the wool (anti-static, moisture-absorbing and naturally flameproof) make Capture the ideal choice in offices, receptions and lounges.

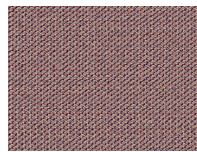
## COLOURS IN THE CAPTURE SERIES



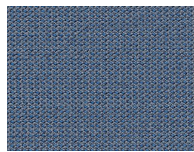
Capture 7217



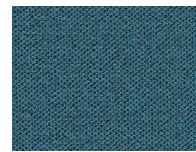
Capture 7223



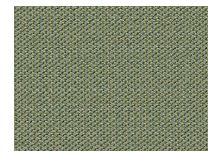
Capture 7227



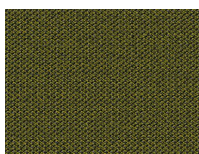
Capture 7251



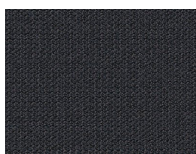
Capture 7260



Capture 7271



Capture 7273



Capture 7298

# CAPTURE



## CAPTURE FULFILLS THE FOLLOWING STANDARDS:

- |   |                                    |                                    |                                     |
|---|------------------------------------|------------------------------------|-------------------------------------|
| ✓ EN ISO 12947-2 + AC 12<br>KPA<br>EN ISO 12947-2+AC 12 KPa | ✓ EN ISO 12945-2<br>EN ISO 12945-2 | ✓ EN ISO 105-B02<br>EN ISO 105-B02 | ✓ EN ISO 13936-2<br>EN ISO 13936-2  |
| ✓ EN ISO 105-X12<br>EN ISO 105-X12                          | ✓ EN ISO 105-D02<br>EN ISO 105-D02 | ✓ EN ISO 105-D01<br>EN ISO 105-D01 | ✓ ISO ISO 105-E16<br>EN ISO 105-E16 |
| ✓ EN ISO 105-E04<br>EN ISO 105-E04                          | ✓ EN 1021-1:2014<br>EN 1021-1:2014 | ✓ EN 1021:2:2014<br>EN 1021-2:2014 |                                     |

## INSPIRATION

