

MORRIS



SPECIFICATION

Material Type	Fabrics	Durability	> 50.000 Turns Martindale
Supplier	Bogesunds	Lightfastness	≥5
Pattern	Melange	Price Class	4
Composition	100% Trevira CS	Washing Recommendations	Foam detergent or machine wash 60°C
Weight	480 g/m ²	Flammability	EN 1021-1 & 2 (in combination with standard polyurethane 20 kg/m ³ - 30 kg/m ³), DIN 4102 B1, NFP 92-512:M1

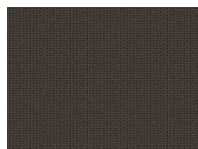
ABOUT

Morris gives you a locally produced fabric which is soft and inviting. The fabric has a tactile structure which gives a wonderful feeling while being comfortable. Morris also creates attitude and dynamics, with its beautiful colours and colour matching with the fabric family Liv. It is a washable fabric (60°C) woven in Trevira CS which meets Möbelfakta's requirements. The broad colour scale, design and washability make this fabric suitable for all environments such as offices, public spaces, schools and healthcare.

COLOURS IN THE MORRIS SERIES



Morris 7900



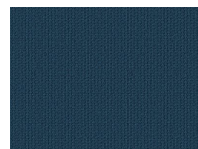
Morris 7927



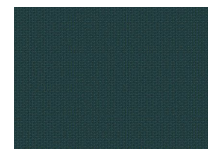
Morris 7933



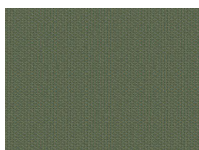
Morris 7937



Morris 7952



Morris 7963



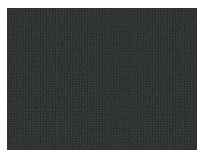
Morris 7978



Morris 7982



Morris 7985



Morris 7998

MORRIS



MORRIS FULFILLS THE FOLLOWING STANDARDS:

- ✓ EN ISO 12947-2 + AC 12
KPA
EN ISO 12947-2+AC 12 KPa
- ✓ EN ISO 12945-2
EN ISO 12945-2
- ✓ EN ISO 105-B02
EN ISO 105-B02
- ✓ EN ISO 105-D01
EN ISO 105-D01
- ✓ ISO ISO 105-C06
EN ISO 105-C06
- ✓ ISO ISO 105-E16
EN ISO 105-E16
- ✓ EN ISO 105-E04
EN ISO 105-E04
- ✓ EN 1021-1:2014
EN 1021-1:2014
- ✓ EN 1021:2:2014
EN 1021-2:2014
- ✓ ISO 105-X05
- ✓ EN ISO 13936-3
MaterialStandards.EN_ISO_13936_3