



## AMBIENT




The Ambient beam sofa focuses on design and comfort. While sturdy, the design is neat, minimalistic and elegant. The seat units can easily be replaced individually, if necessary. Ambient has many options, such as different beam lengths, several armrests, screens with or without magazine holders and tables that provide a pleasant extra surface. The solid wood table tops, like the wooden seat base, are FSC® labelled. Power sockets in the table top and fittings for floor mounting are available as accessories. Frame in Colours by Materia (CbM\*) powder coating. Ambient beam sofa is suitable for airports, hospitals and schools.

\*CbM = beige, mustard yellow, dusty pink, rusty red, burgundy red, blue grey, green, grey, dark grey, black, white

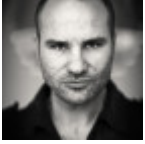


The mark of  
responsible forestry

**VARIANTS**

	<b>W</b>	<b>D</b>	<b>H</b>	<b>SH</b>
				
				
				
	520 mm	610 mm	830 mm	460 mm
	520 mm	520 mm	105 mm	460 mm
	55 mm	520 mm	300 mm	
	50 mm	470 mm	300 mm	
	180 mm	520 mm	300 mm	
	50 mm	560 mm	930 mm	
	100 mm	560 mm	930 mm	
	150 mm	560 mm	930 mm	
	520 mm	470 mm		
	270 mm	470 mm		

## DESIGNER



Fredrik Mattson